



FORZA
GLOBAL
World Force in Plumbing Systems

FORZATM
STAINLESS WATER CRIMP

**SPECIFICATIONS &
INSTALLATION GUIDE**

ANOTHER QUALITY
PRODUCT BY
FORZA GLOBAL



Forza Global in partnership with one of the world's leading stainless steel manufacturers has developed a stainless crimp system that is fit for purpose for the Australian and New Zealand markets.

Forza Stainless Press is available in sizes DN16 through to DN20 with full ranges of 316L grade fittings for your Hard Water application.

WHY INSTALL FORZA STAINLESS CRIMP?

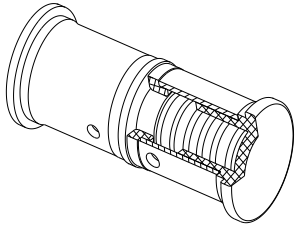
LEAD FREE

- Fittings suit current Forza PN20 Pex A Pipe
- No welding required, eliminating the need for hot works permit
- Full range of Fittings in DN16 & DN20
- Dedicated technical support
- Cost saving on installation
- User friendly portable tooling
- Longer service life

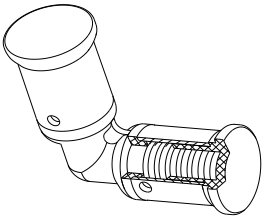




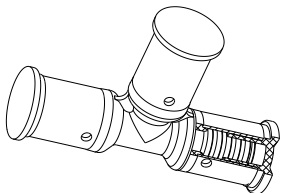
FORZA STAINLESS WATER CRIMP FITTINGS LIST



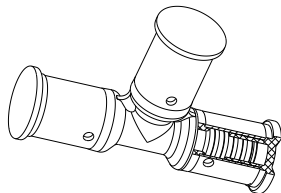
CODE	SIZE	DESCRIPTION
COUPLING		
FCSC16SS	DN16	FORZA S/STEEL WATER CRIMP NO.1 STRAIGHT COUPLING 16MM
FCSC20SS	DN20	FORZA S/STEEL WATER CRIMP NO.1 STRAIGHT COUPLING 20MM
REDUCING COUPLING		
FCRC2016SS	DN20-16	FORZA S/STEEL WATER CRIMP NO.1 REDUCING COUPLING 20MM X 16MM



ELBOW		
FCE16SS	DN16	FORZA S/STEEL WATER CRIMP NO.12 EQUAL ELBOW 16MM
FCE20SS	DN20	FORZA S/STEEL WATER CRIMP NO.12 EQUAL ELBOW 20MM



EQUAL TEE		
FCET16SS	DN16	FORZA S/STEEL WATER CRIMP NO.24 EQUAL TEE 16MM
FCET20SS	DN20	FORZA S/STEEL WATER CRIMP NO.24 EQUAL TEE 20MM

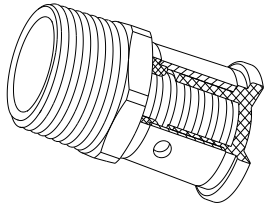


CENTRE REDUCING TEE		
FCRT202016SS	DN20X20X16	FORZA S/STEEL WATER CRIMP NO.25 REDUCING TEE 20MM X 20MM X 16MM

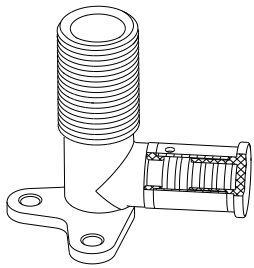
END REDUCING TEE		
FCRT201620SS	DN20X16X20	FORZA S/STEEL WATER CRIMP NO.26 REDUCING TEE 20MM X 16MM X 20MM

END AND CENTRE REDUCING TEE		
FCRT201616SS	DN20X16X16	FORZA S/STEEL WATER CRIMP NO.27 REDUCING TEE 20MM X 16MM X 16MM

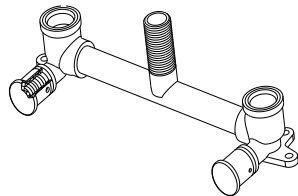
FORZA WATER CRIMP FITTINGS LIST



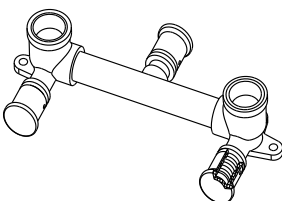
CODE	SIZE	DESCRIPTION
MALE CONNECTOR		
FCMSC1615SS	DN16X1/2" M	FORZA S/STEEL WATER CRIMP NO.3 STRAIGHT CONNECTOR 16MM X 1/2" BSP MALE
FCMSC2020SS	DN20X3/4" M	FORZA S/STEEL WATER CRIMP NO.3 STRAIGHT CONNECTOR 16MM X 3/4" BSP MALE



MALE LUGGED ELBOW		
FCWM161595SS	DN16X1/2" MI-95	FORZA S/STEEL WATER CRIMP NO.19BP ELBOW 16MM X 1/2" BSP MALE 95MM LONG



BATH/LAUNDRY ASSEMBLY		
FCBLARA300SS	300MM	FORZA S/STEEL WATER CRIMP BATH/LAUNDRY ASSEMBLY RIGHT ANGLE 300MM



SHOWER ASSEMBLY		
FCSARA150SS	150MM	FORZA S/STEEL WATER CRIMP SHOWER ASSEMBLY RIGHT ANGLE 150MM



Forza Pex pipe and fittings are guaranteed against manufacturing defects for a period of 50 YEARS when installed and used in accordance of the Australian Plumbing code and or the LOCAL or STATE Authority and when installed by a licensed PLUMBER.



Forza Pex PIPE complies with the standards as set out in AS/NZS 2492:2007 Cross Linked polyethylene (PE-X) pipes for pressure applications.

Licence No. WM 74616

Forza Pex FITTINGS comply to the standards as set out in AS/NZS 2537.2:2011 - Mechanical jointed fittings for use with cross linked polyethylene pipe (XLPE) for hot and cold applications.

Licence No. WM74615

a product by





FORZA GLOBAL PTY LTD
ABN 42 161 669 549 ACN 161 669 549
2/8 BARCLAY ROAD, DERRIMUT, VIC 3030
T: (03) 8348 5704 F: (03) 9923 6324
WWW.FORZAGLOBAL.COM.AU